



Family Planning & Primary Care Integration

Susan Billinghamst-Hamlet MPH, PA

Family Planning
Program Director
Morris Heights Health Center



Family Planning & Primary Care Integration

Morris Heights Health Center

“The Caring Place: where the patient is at the center of everything we do”

- Opened in March 1981
- 8 Clinical Sites
 - 4 of which are Title X Sites
- 19 School Based Health Centers
- Patients Seen Yearly: > 53,000
- Services Provided
 - Adult Medicine
 - Family Medicine
 - Pediatrics
 - Women’s Health
 - Men’s Health
 - Adolescent Health
 - Specialty Services
 - WIC
 - Family Planning
 - Social Services
 - HIV Services
 - Mental Health
 - Dental Care
 - Physical Therapy
 - Extended Care





Family Planning & Primary Care Integration

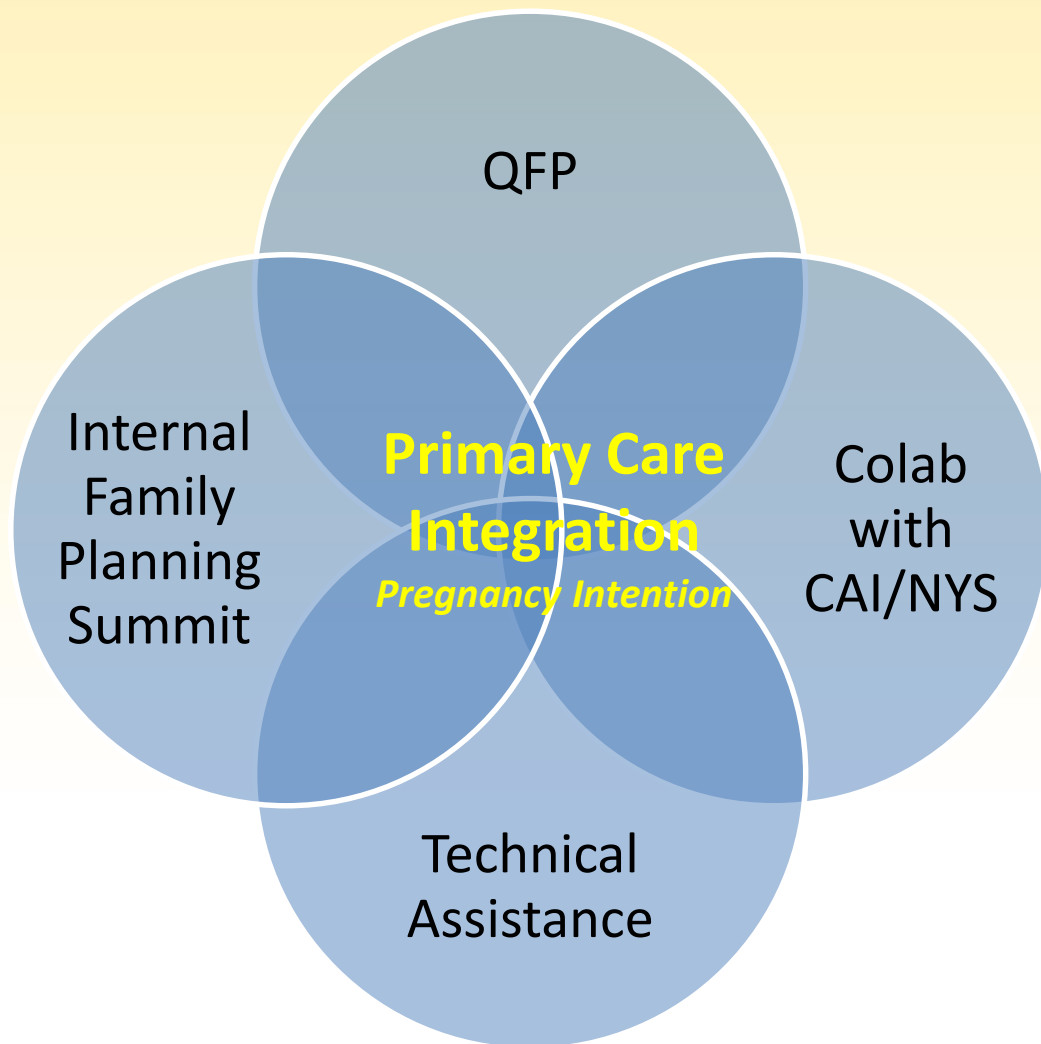
Mission Statement

We believe that reproductive and sexual health is an **integral part of primary care.**

Our vision is to remove the barriers that prevent our patients from obtaining the most reliable forms of contraception by having ALL staff at ALL sites committed to providing all forms of contraception, including LARCs.

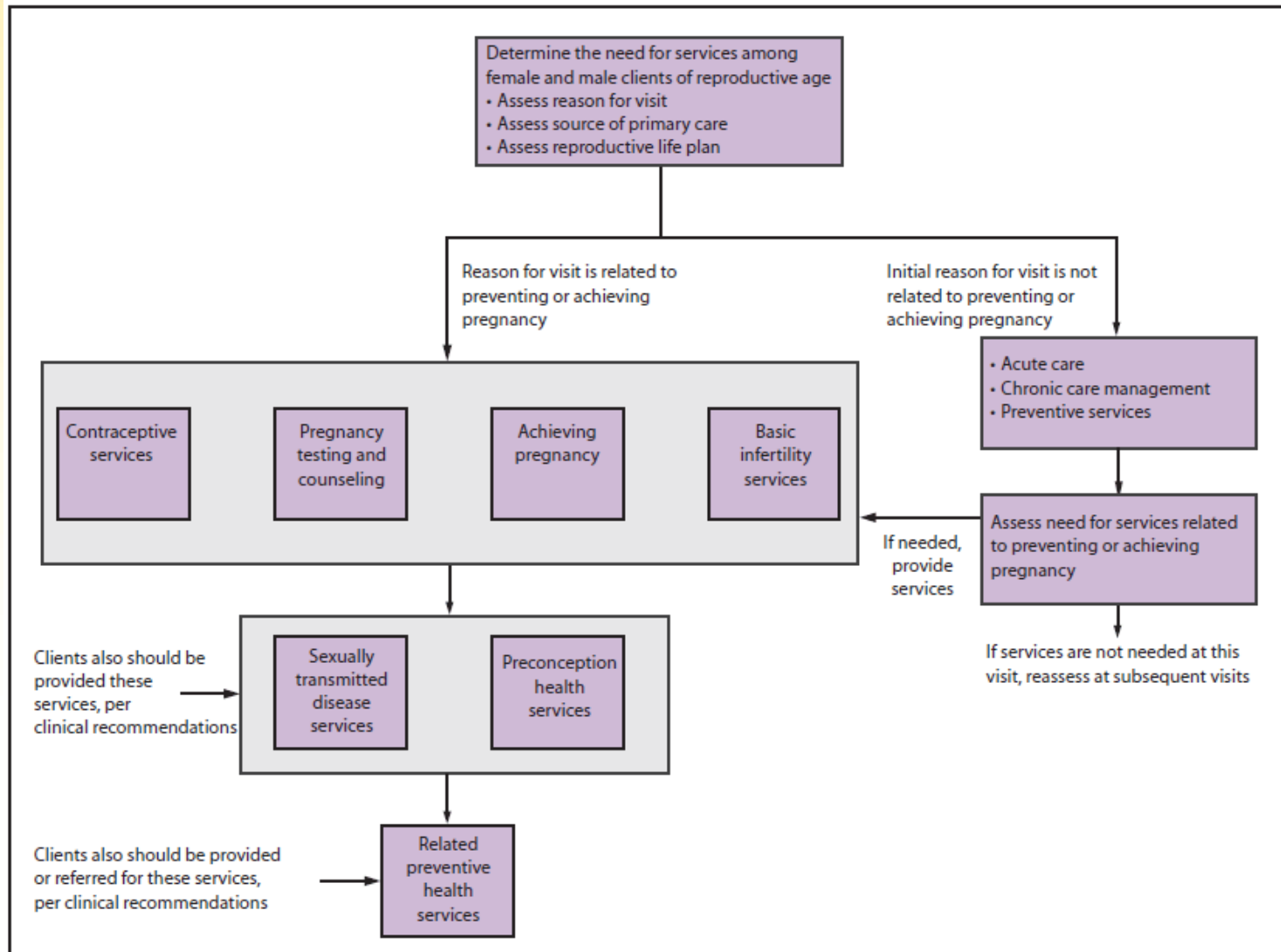


Family Planning & Primary Care Integration





Family Planning & Primary Care Integration





Family Planning & Primary Care Integration

**Reproductive
health questions
are included in
medical model
for all patients
between the
ages of 10-49/59**

**All medical
departments
participate in
family planning
medicine**

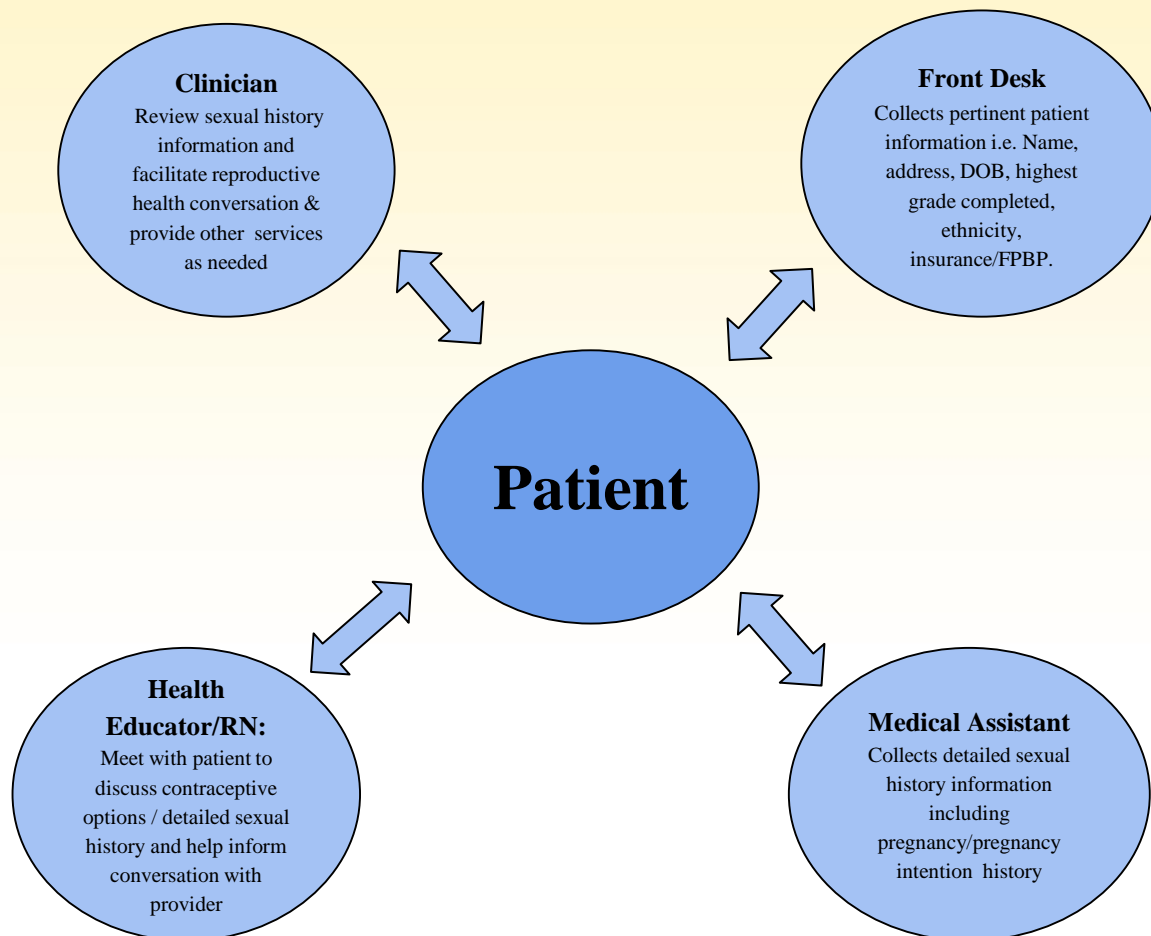
**Each provider
keeps
reproductive life
plan in mind
with every
patient**

**All aspects of
health center
are dedicated to
QFP Guidelines**



Family Planning & Primary Care Integration

Incorporate a medical model by following a clear, concise workflow & utilize the EMR to ensure compliance.





Family Planning & Primary Care Integration

Every patient who enters Morris Heights Health Center is asked the following questions:

- Do you have any children now?
- Do you want to have more children?
- Would you like to become pregnant in the next year?
- Are you currently on birth control?
 - Contraceptive method PRIOR to visit_____
 - Contraceptive method AFTER visit_____



Family Planning & Primary Care Integration

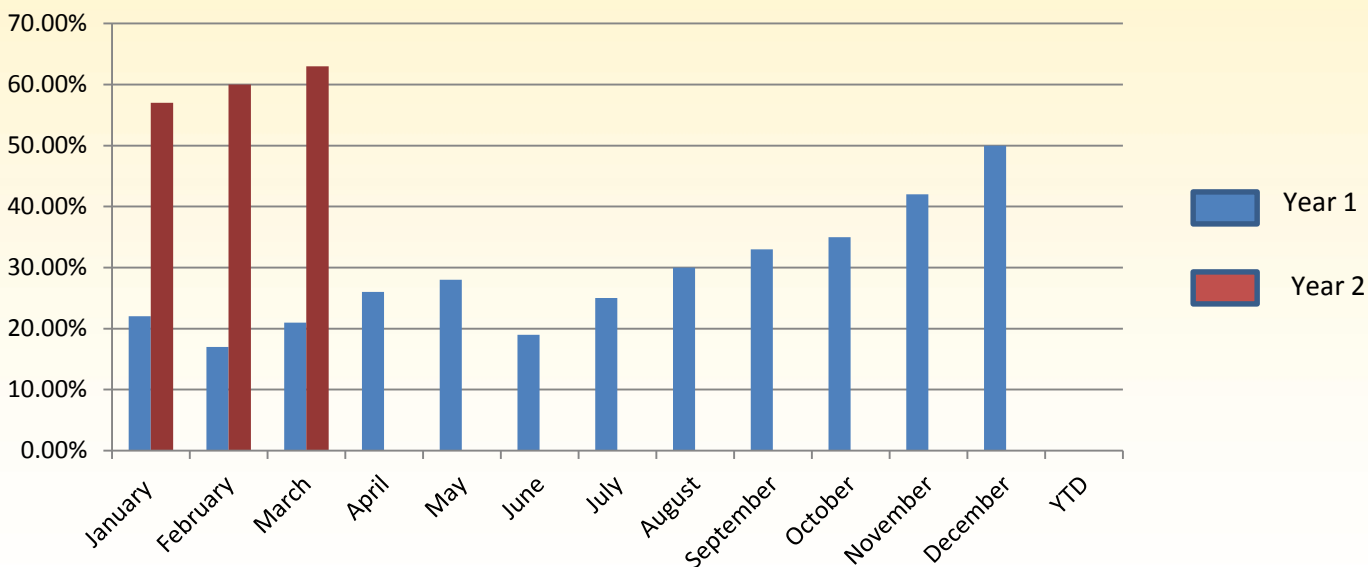
Provider Report Card Method of Contraception

Provider	Patients	Prior Method	After Method	Z 30.
Provider 1	150	70	62	59
Provider 2	116	54	50	48
Provider 3	165	71	17	0
Provider 4	88	15	11	9
Provider 5	103	62	61	61
Provider 6	122	83	83	83
Provider 7	79	38	37	36
Provider 8	117	80	75	61
Provider 9	143	47	45	39
Provider 10	111	61	52	30



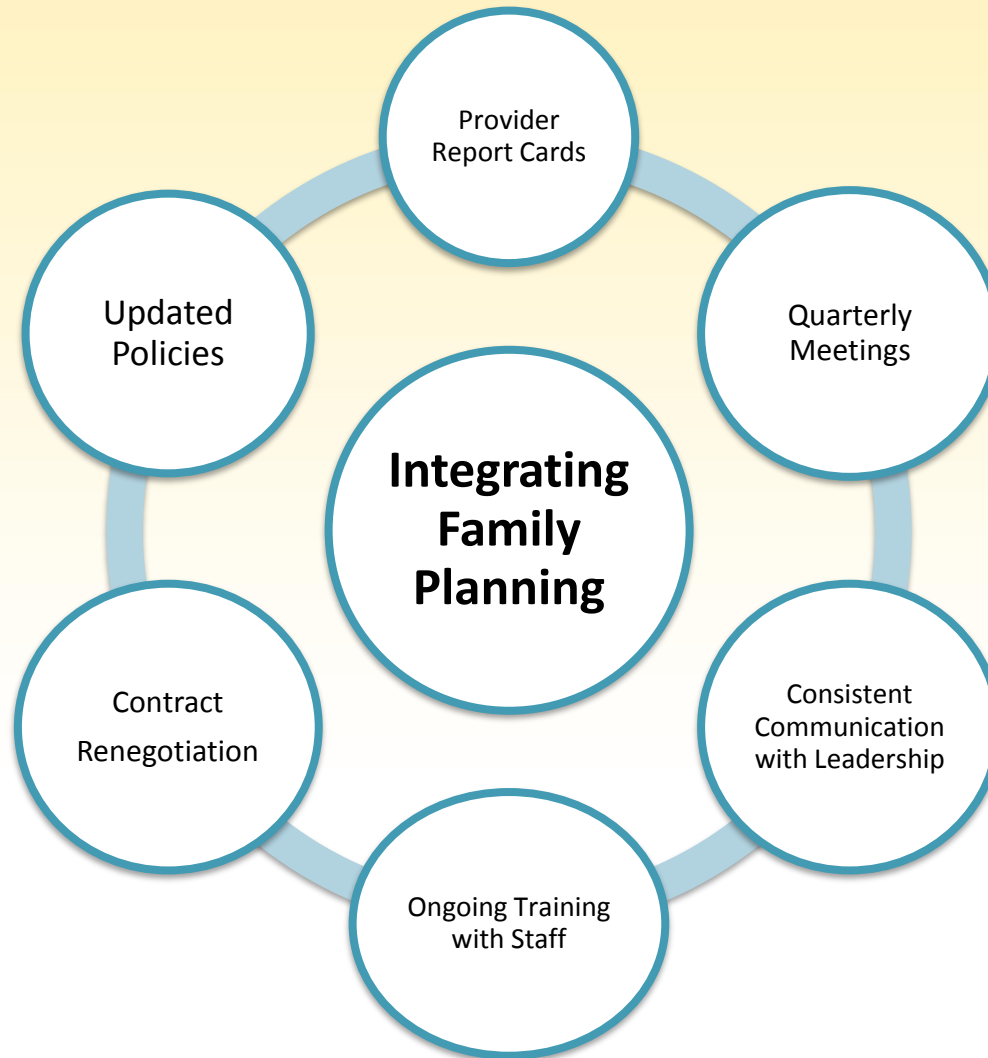
Family Planning & Primary Care Integration

Monthly Performance Report Effective Method





Family Planning & Primary Care Integration





Family Planning & Primary Care Integration

To achieve a successful integration, we need:

- Senior & Mid-Level Leadership Buy-in
- Cultural shift within the agency
- All support staff, including clinician, buy-in
- New hires & current staff are in tune with sexual and reproductive health
 - Adolescent & LGBT affirming staff
 - Integrate into new hire interview and annual orientation
 - Ongoing staff training
- Appropriate billing
 - Grant funding should be payment of last resort
 - FPBP
 - Sustainability Mindset
- **Supplies on hand *at all times***



Family Planning & Primary Care Integration

Thank you
Questions

